

Area D :	Area E :	Area F :	Area G :
Cargo Lift Dimension	Guest Lift Dimension	Hanging Panel :	
Internal Size : L x W x H	Internal Size : L x W x H	Dimension : W x H	
1.61 x 1.485 x 2.35	1.76 x 1.475 x 2.34	1.25 x 2.58	
Car Opening : L x H	Car Opening : L x H	Light Track :	
0.9 x 2.1	1 x 2.1	Panel Height : 2.60	
Loading Max : 1150Kg	Loading Max : 1150Kg	Power Socket (Top) :	
		Power Socket (Bottom) :	

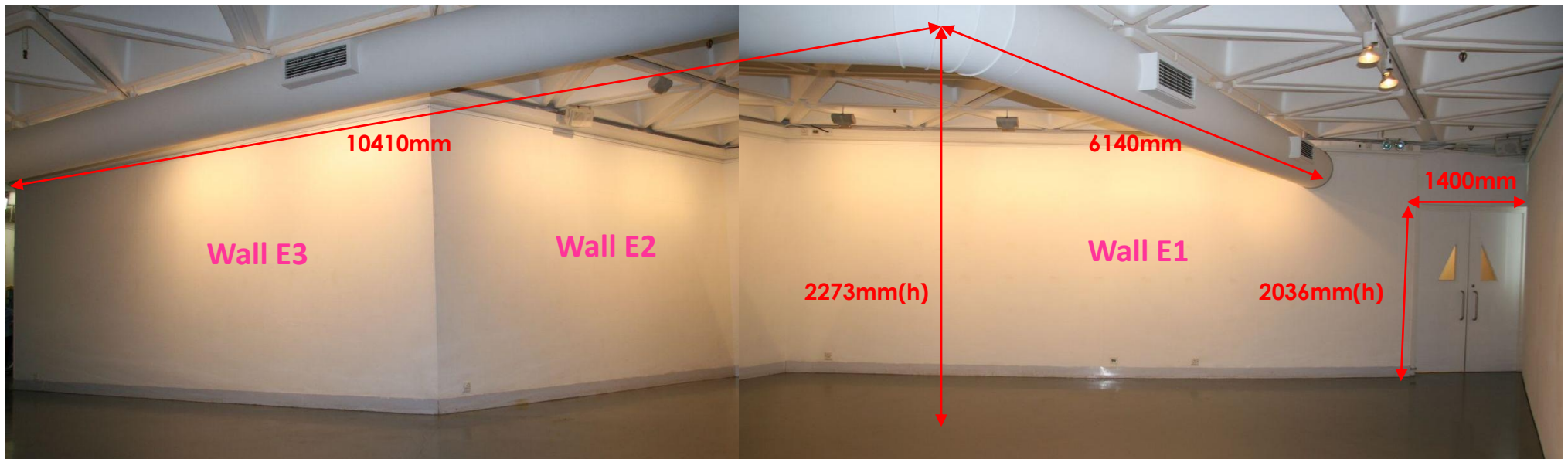
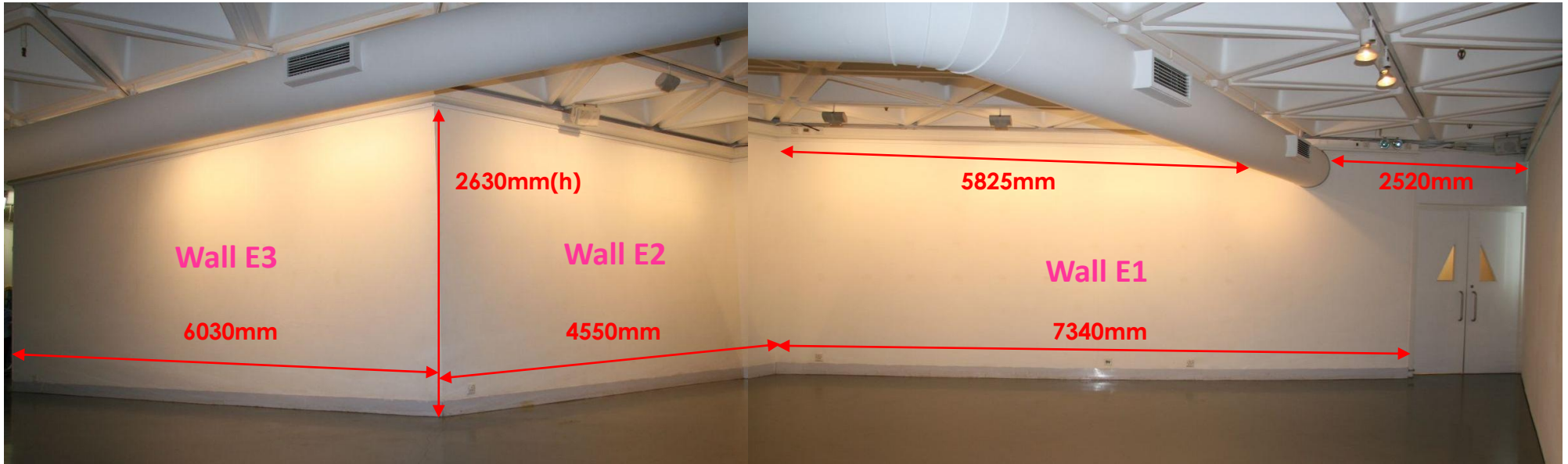
All Measurements in metre

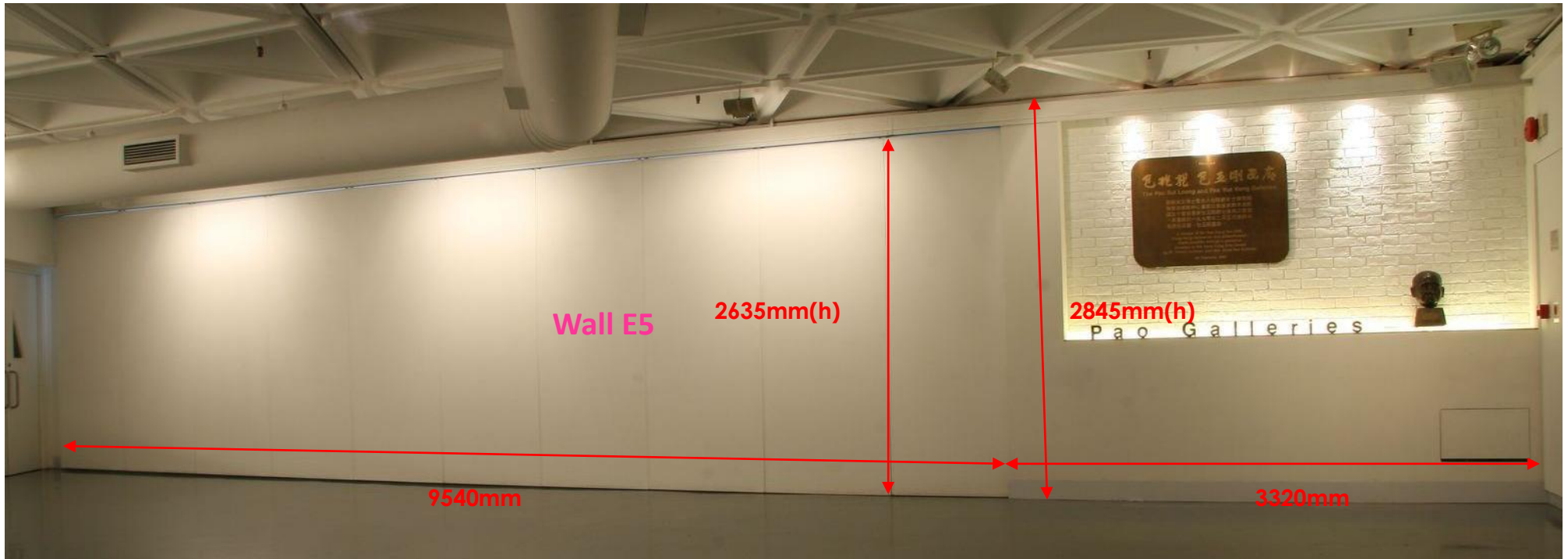
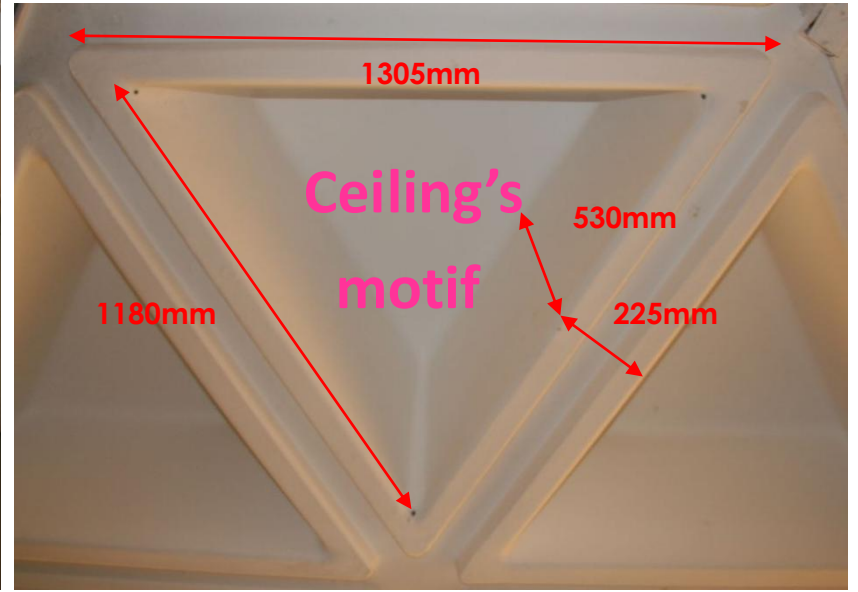
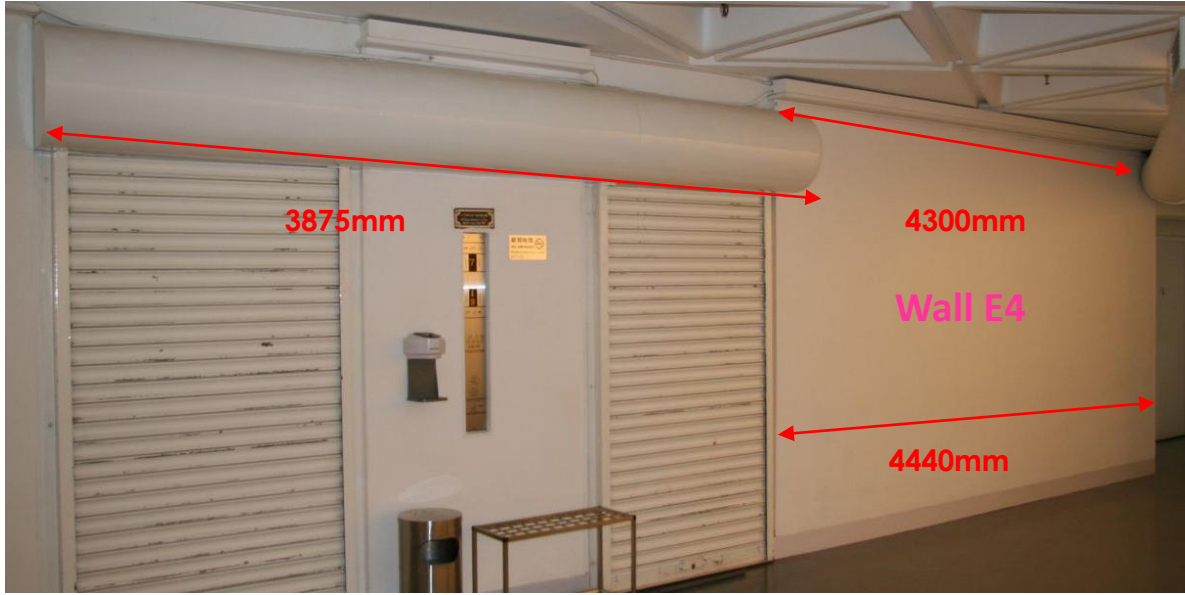
(Not to Scale)

Floor Loading : 3 Kpa (300 kg/sq.m)

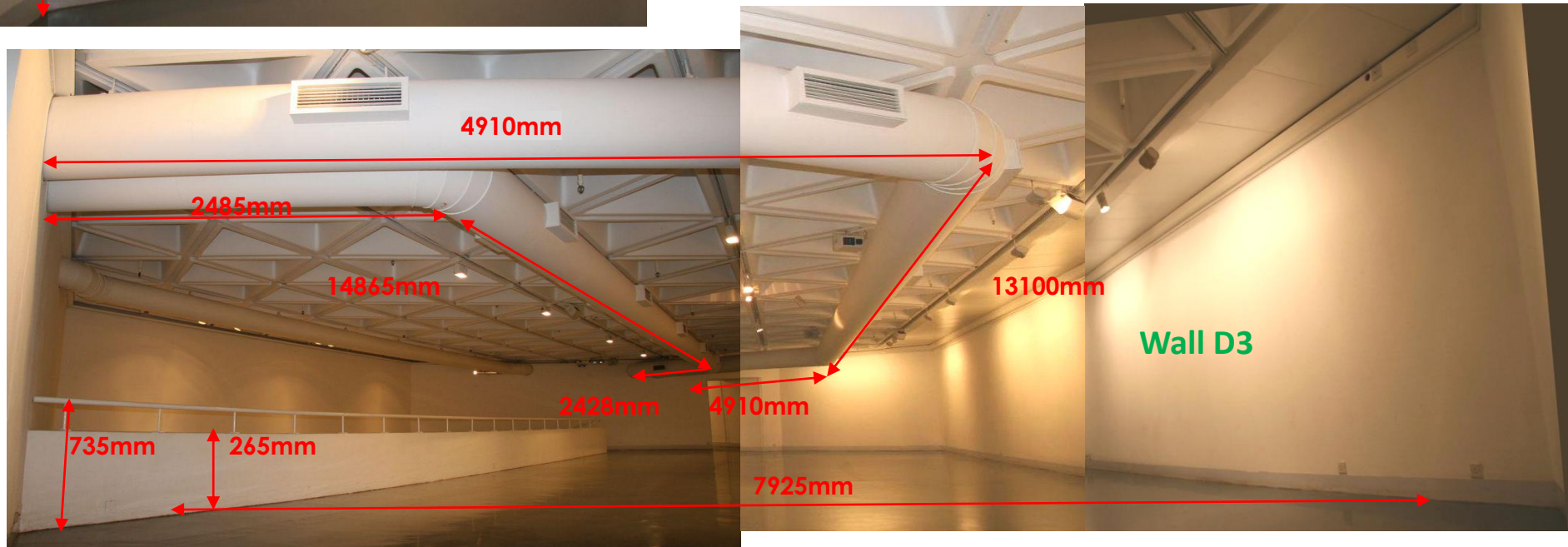
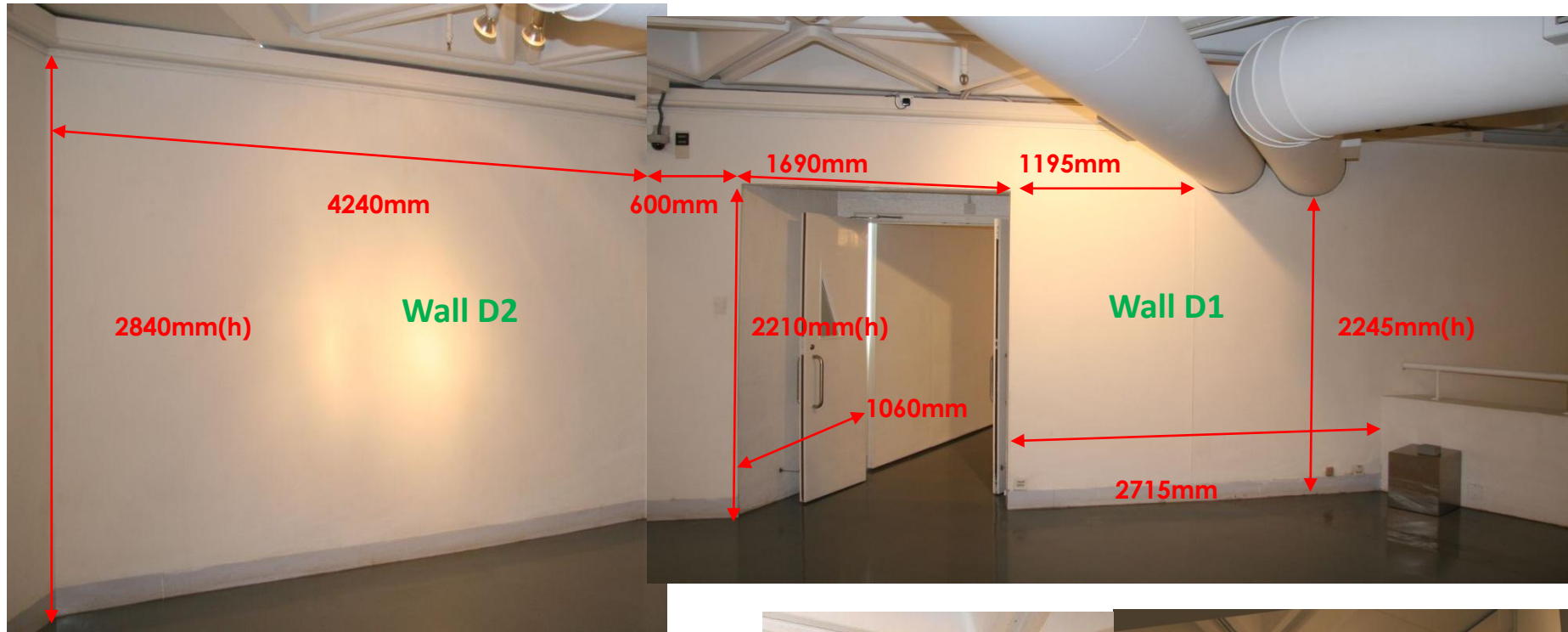
Measurement for the Entrance Area at 5F Pao Galleries

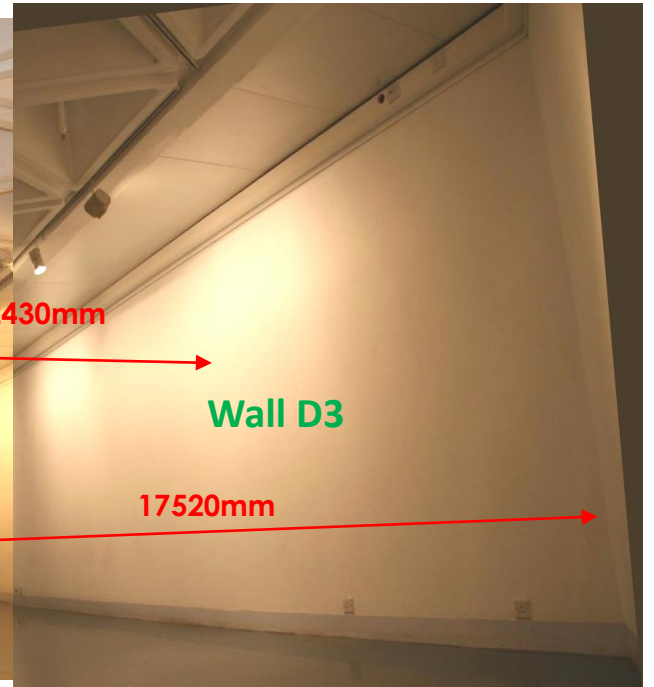
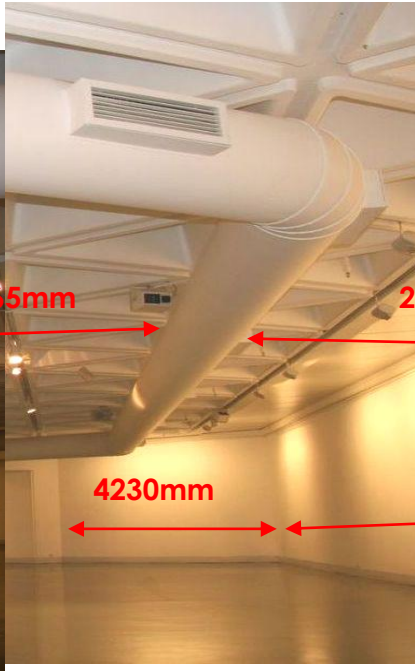
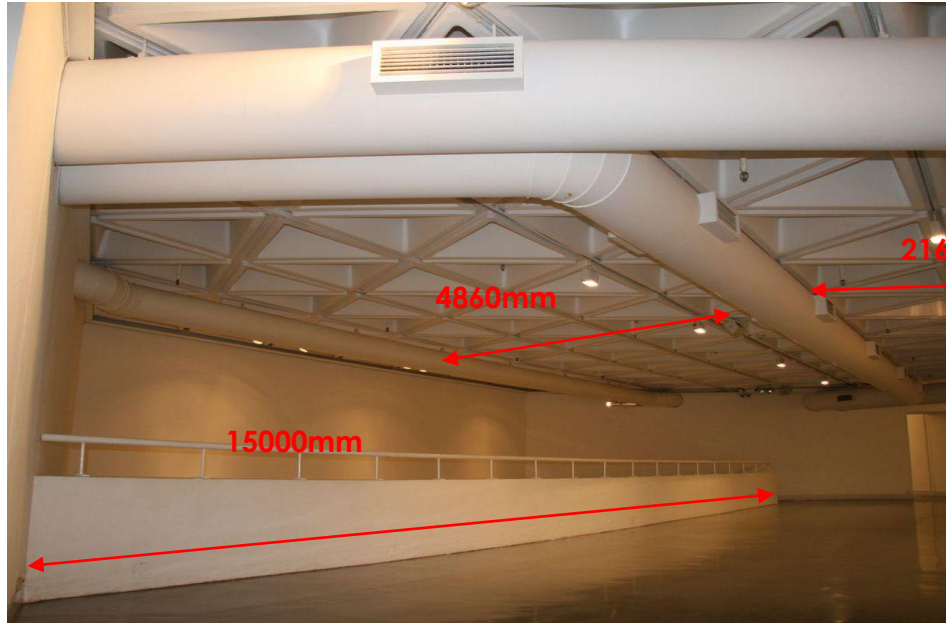
5/F Gallery Area E





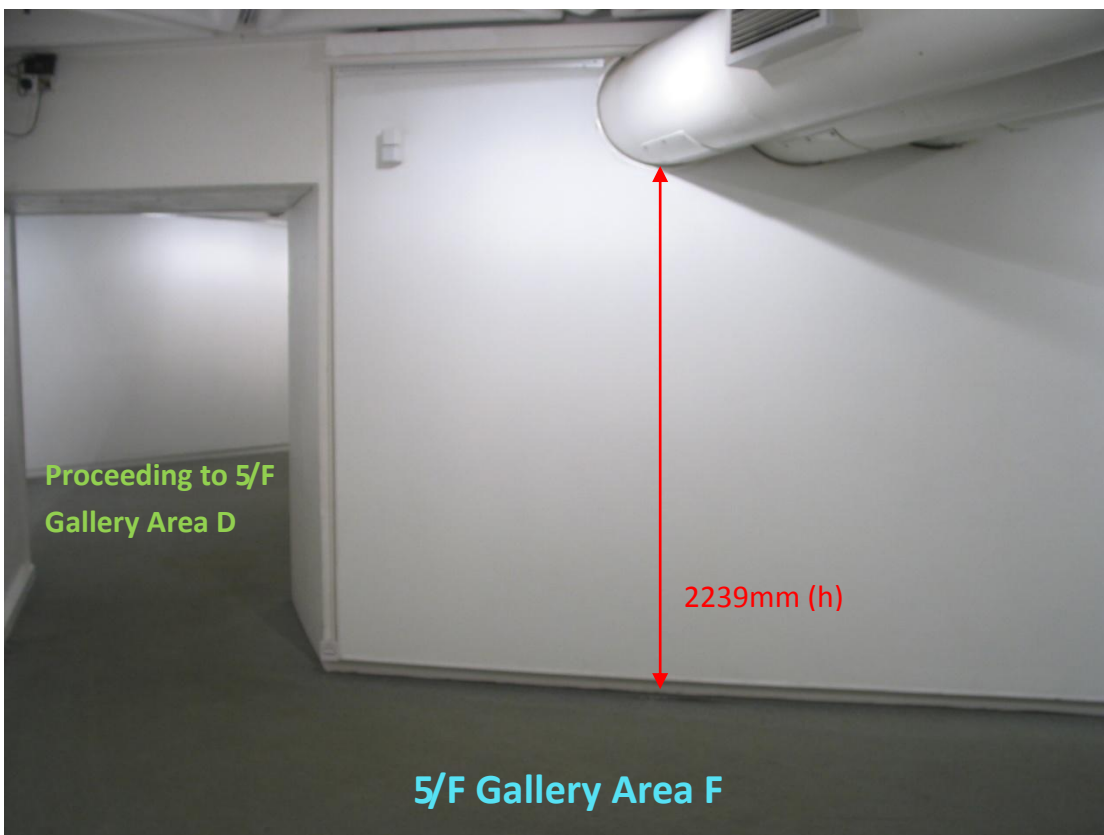
5/F Gallery Area D

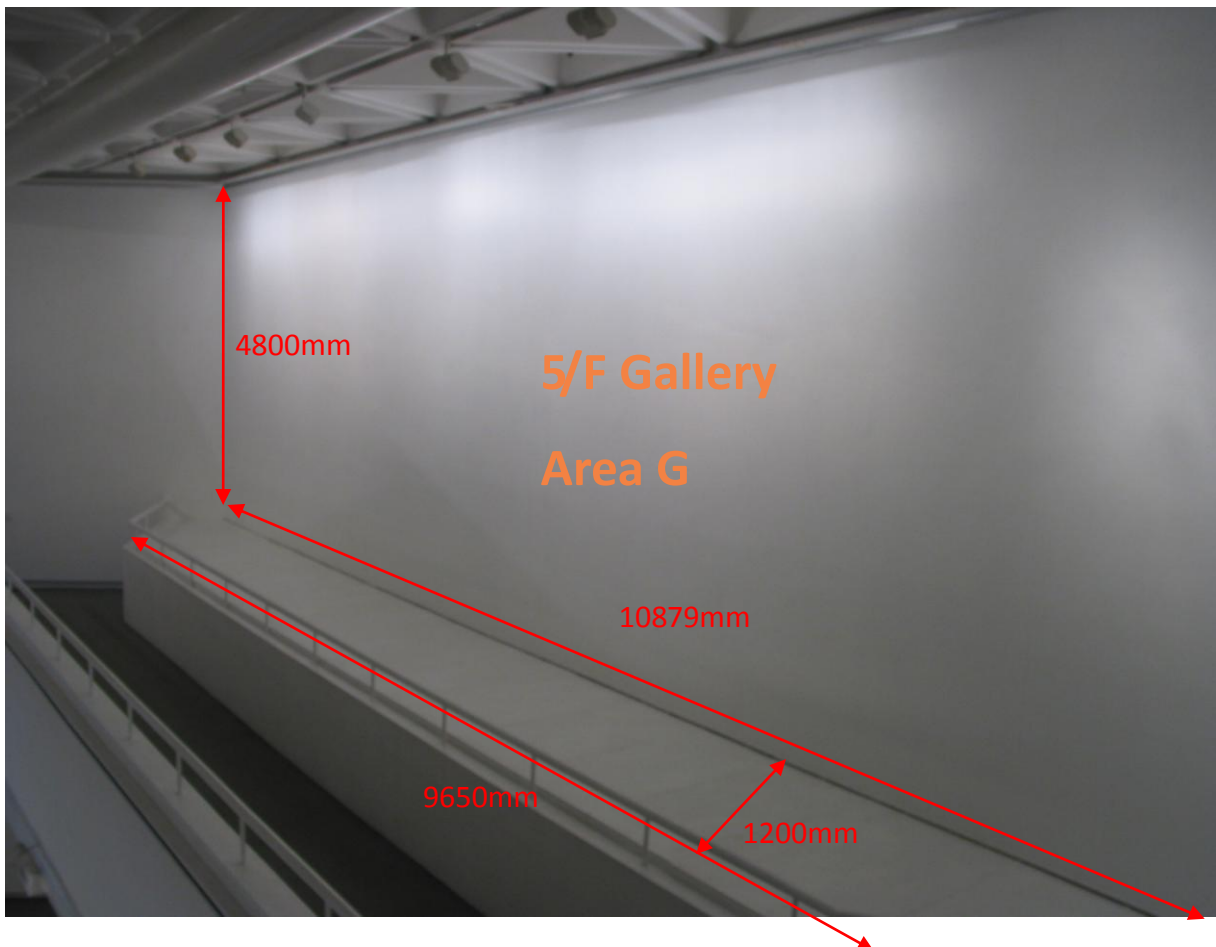


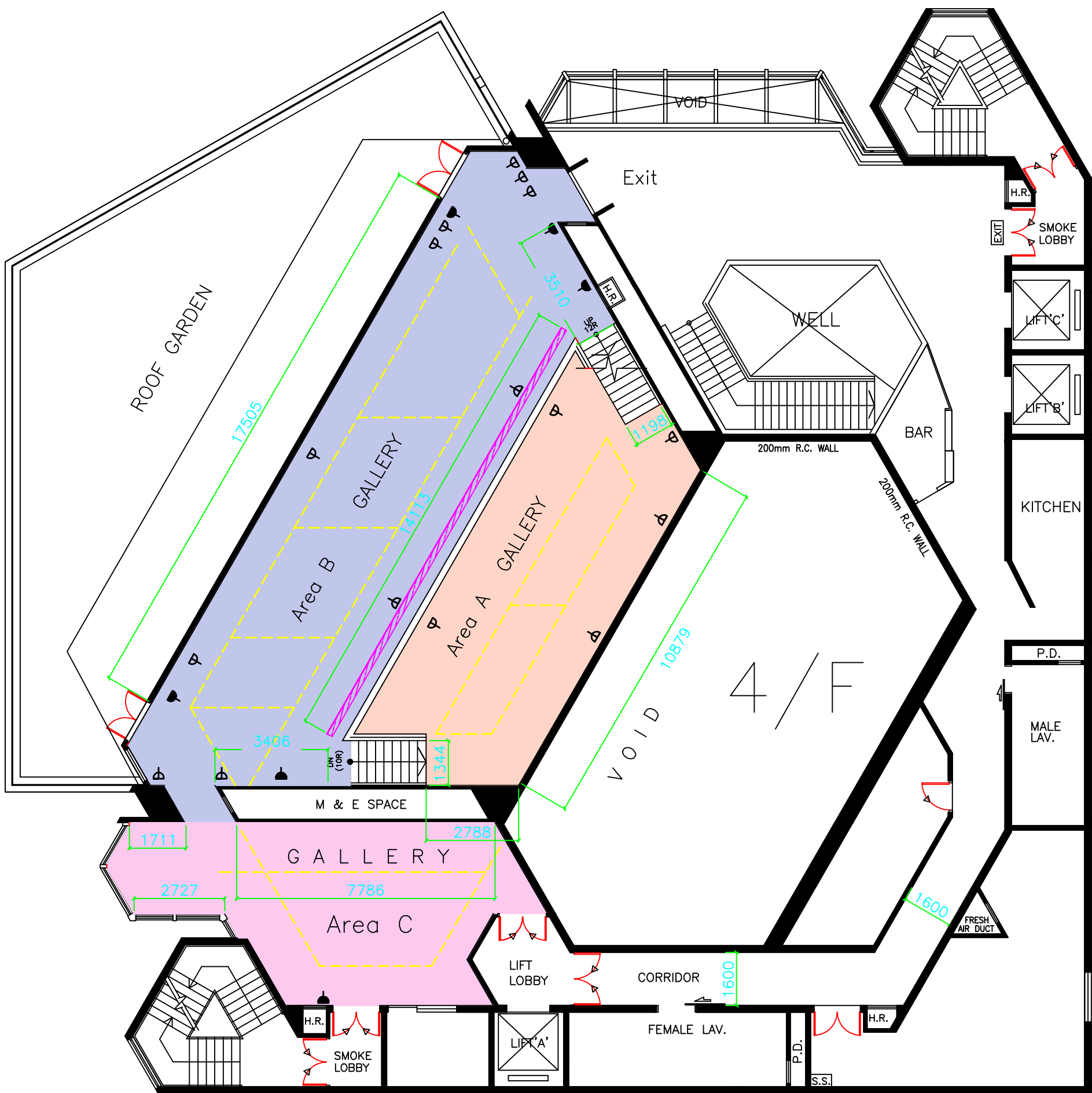








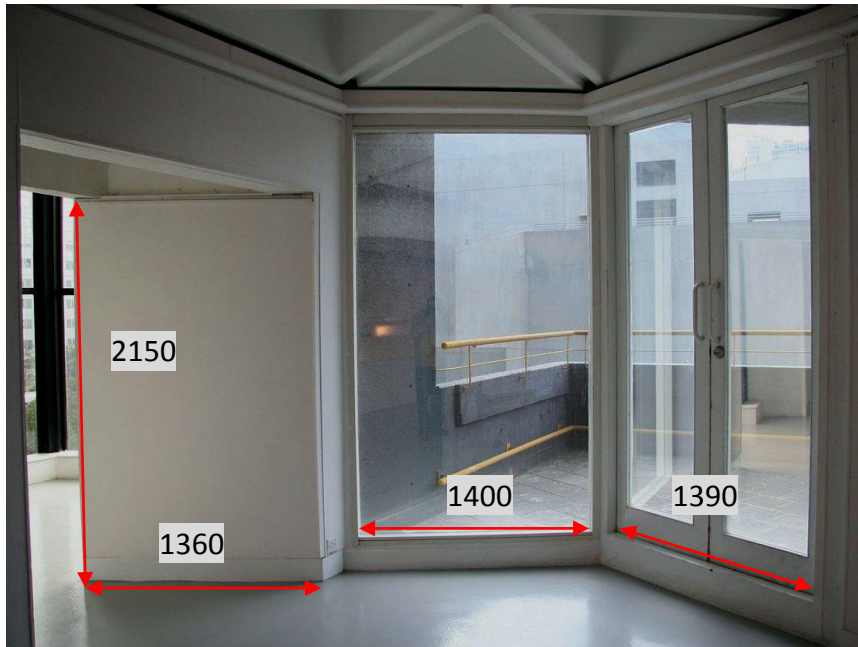
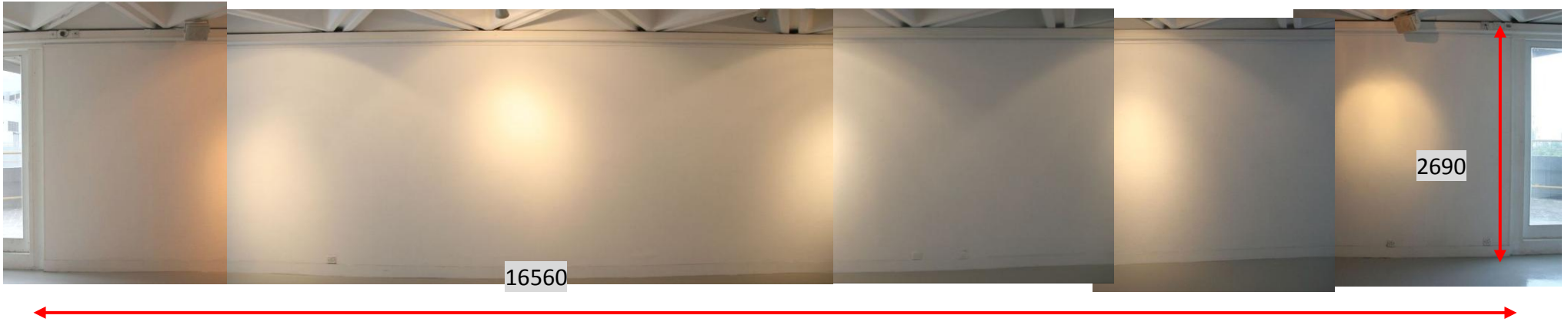


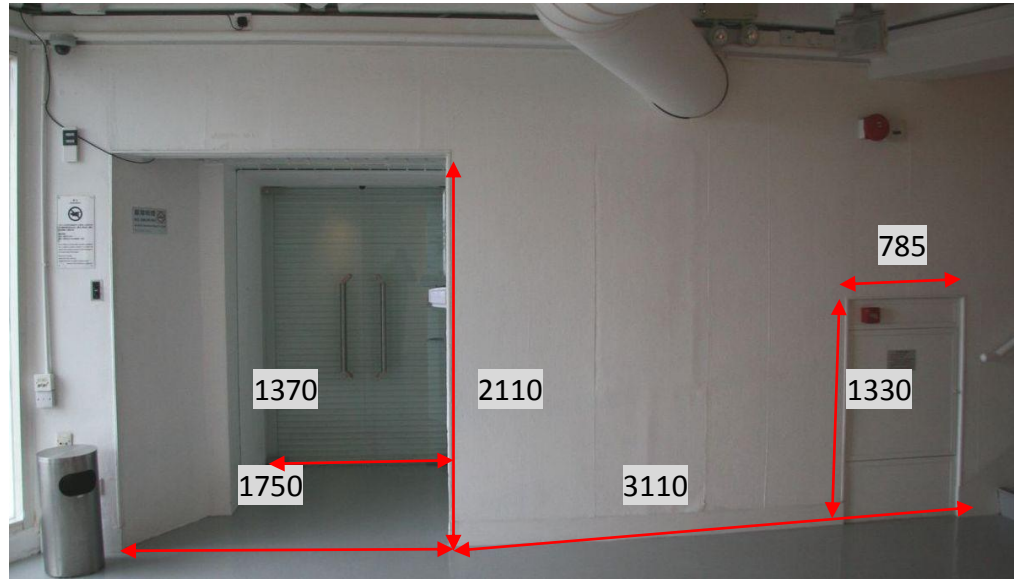
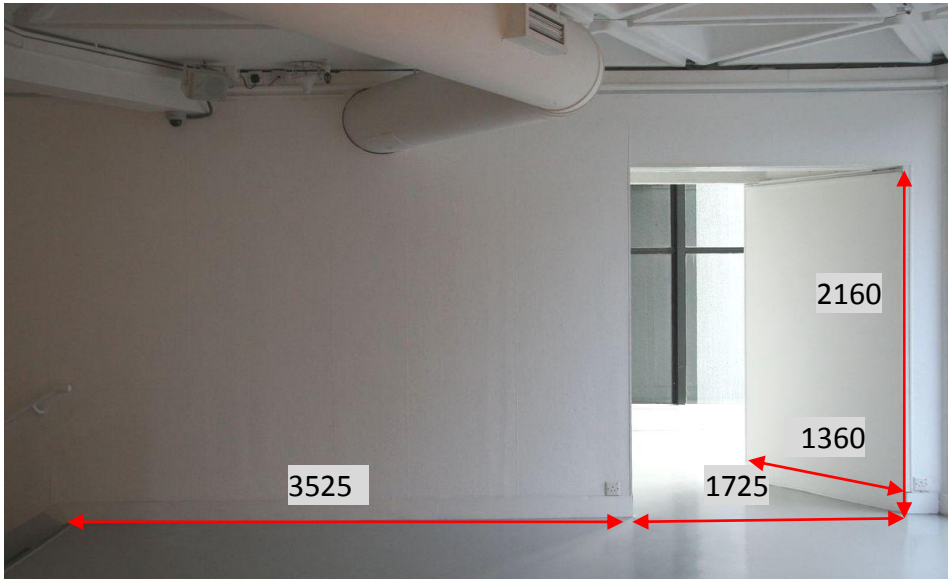


- | | | | | | |
|---------------------------|---|---------------------------|---|---------------------------|--|
| Area A : | | Area B : | | Area C : | |
| Cargo Lift Dimension | | Guest Lift Dimension | | Hanging Panel : | |
| Internal Size : L x W x H | | Internal Size : L x W x H | | Dimension : W x H | |
| 1.61 x 1.485 x 2.35 | | 1.76 x 1.475 x 2.34 | | 1.25 x 2.58 | |
| Car Opening : L x H | | Car Opening : L x H | | Light Track : | |
| 0.9 x 2.1 | | 1 x 2.1 | | Panel Height : 2.60 | |
| Loading Max : 1150Kg | | Loading Max : 1150Kg | | Power Socket (Top) : | |
| | | | | Power Socket (Bottom) : | |

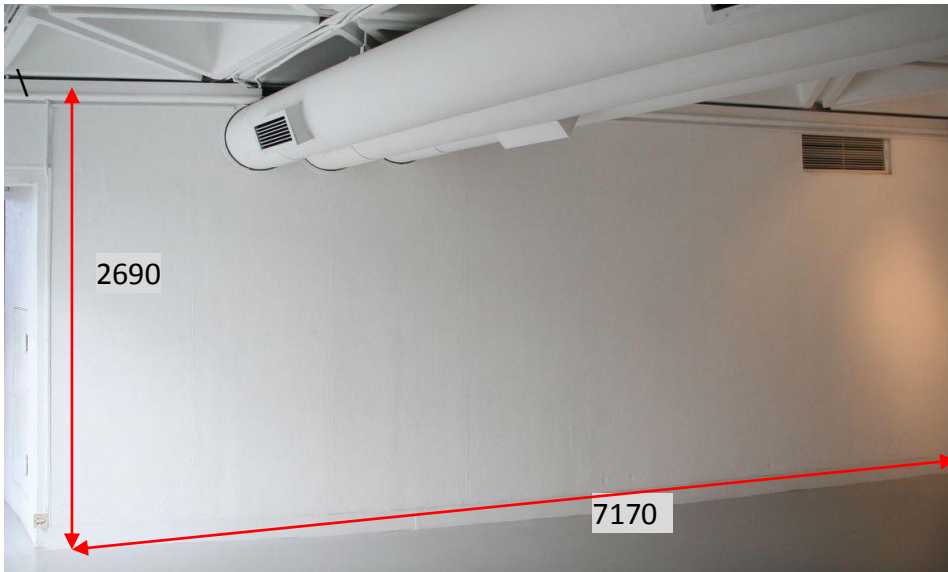
All Measurements in metre
 (Not to Scale)
 Floor Loading : 3 Kpa (300 kg/sq.m)

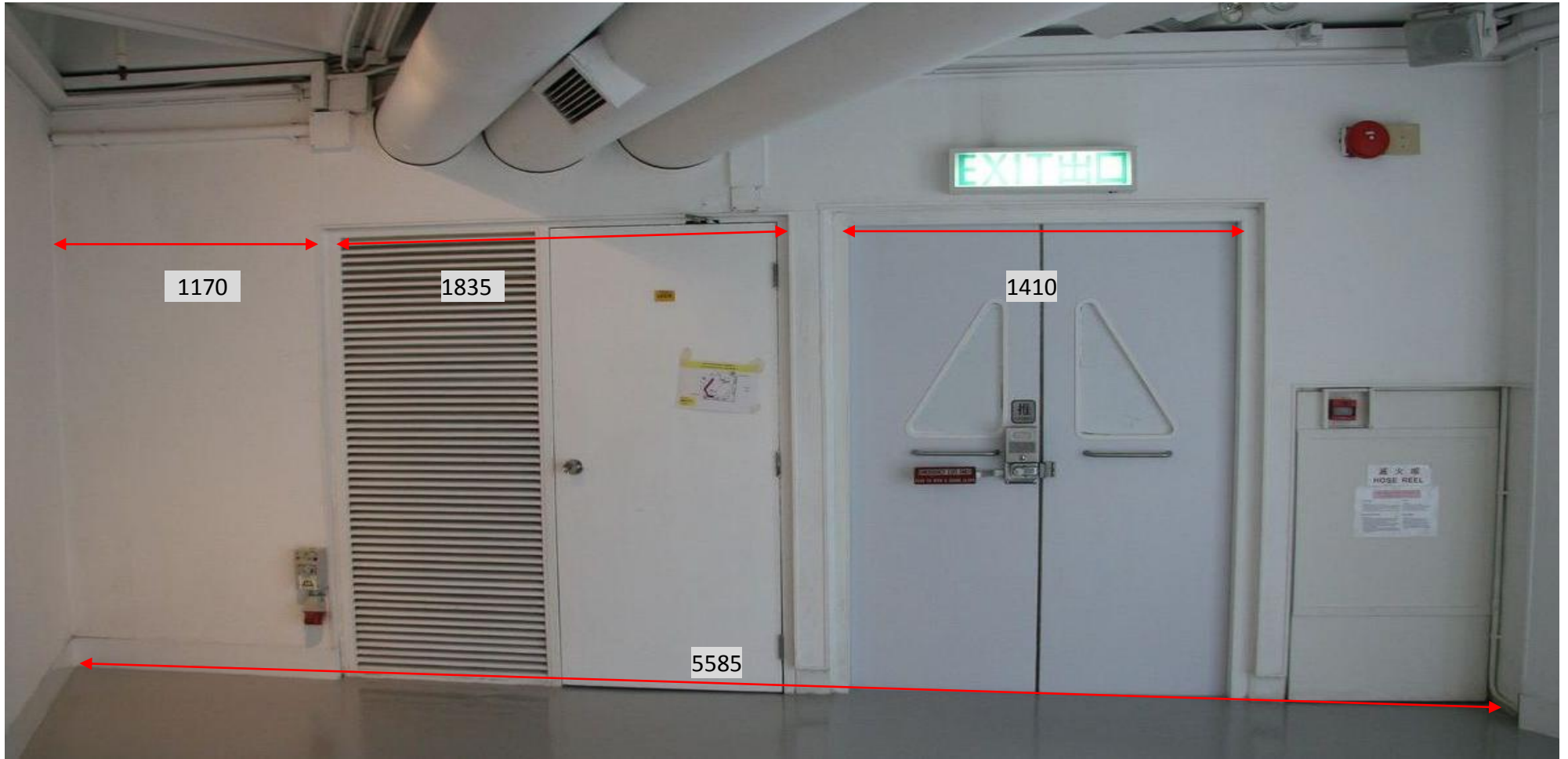
Area B





Area C





1170

1835

5585

1410

滅火器
HOSE REEL

4/F

Section A

All measurements in millimeter (Not to scale)

